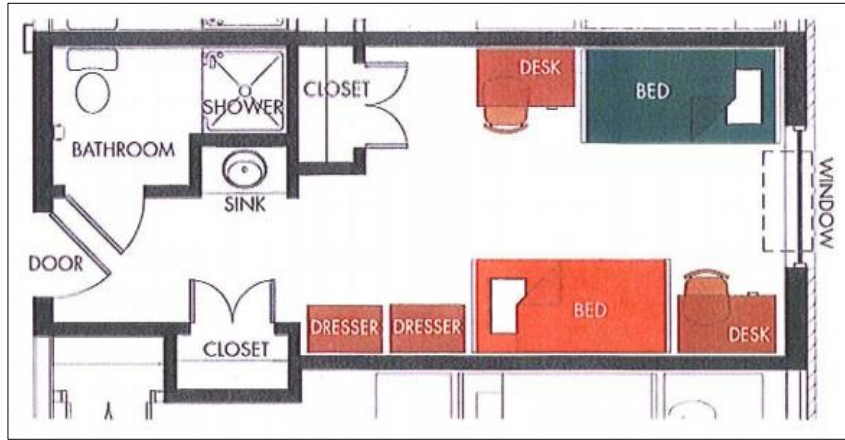


# Paca & Tubman Unit Measurements



(Pictured Left: A typical unit layout.)

## THE FOLLOWING IS APPROXIMATE MEASUREMENTS FOR YOUR PACA & TUBMAN UNIT.\*\*

**Extra Long Twin Bed:** 38"W x 36"H x 85"L

*(Bed's are adjustable up to 36". No risers are needed.)*

**Desk:** 42"W x 24"D x 30"H

**Desk Chair:** 20.5"W x 21.5"D x 33.5"H

**Dresser:** 30"W x 34"D x 30"H

**Typical Unit Size:** 26'L x 12'W

**Typical Closet:** 2'D x 4'W

**Typical Window:** 58"W x 58"H

**Typical Shower Curtain:** 6'W x 6'H

*(\*\*Please note that all measurements are an approximation and individual unit measurements can vary slightly.)*

## The Room Includes:

- Two Twin XL Beds
- Two Desks
- Two Desk Chairs
- Two Dressers
- Two closets
- Bathroom (shower and toilet inside, sink on the outside.)

Questions? Feel free to contact us!



**Capstone Management**

415 Towson Way, Suite 135

Towson, MD 21252

410-704-7484 (Office) 410-704-7324 (Fax)

pacatubman@cocm.com

www.pacatubman.com